

U.S. DEPARTMENT OF
ENERGY

Office of
**TECHNOLOGY
TRANSITIONS**

LAB PARTNERING SERVICE

DISCOVER. CONNECT. PARTNER.

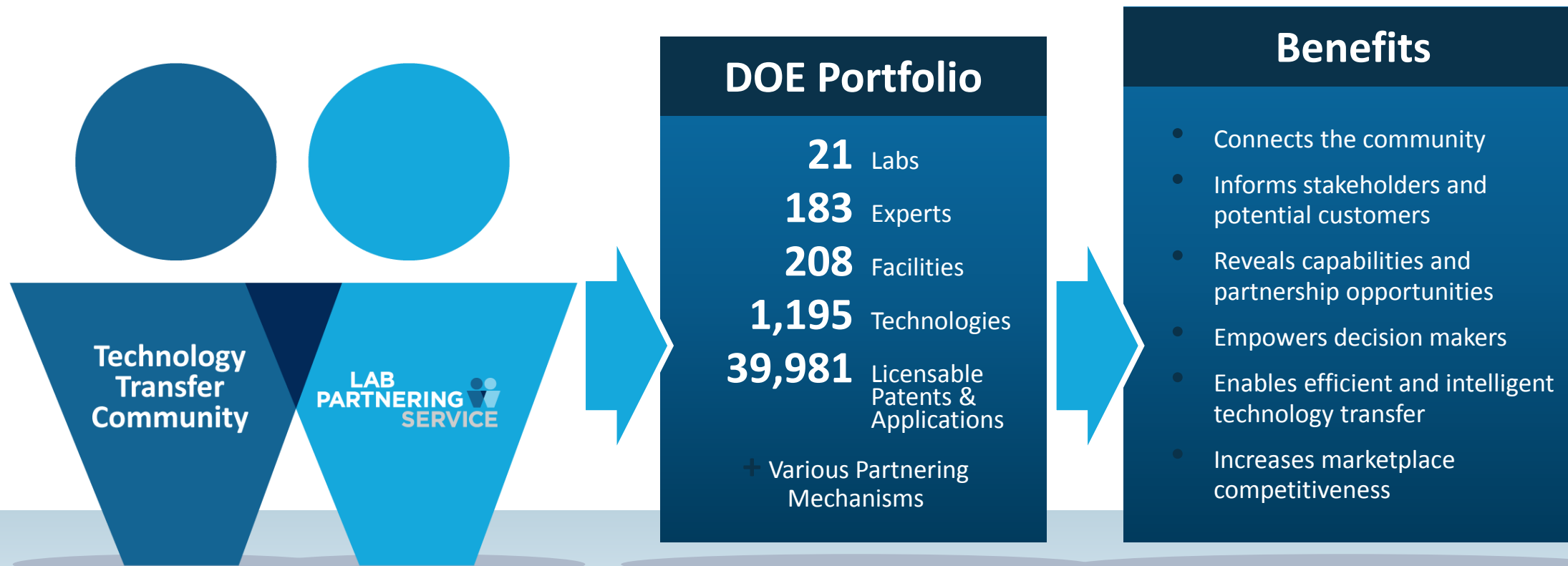
Lab Partnering Service and Community Benefits

DOE's Lab Partnering Service (LPS)

enables commercialization by connecting the international technology transfer community to the DOE's portfolio of experts, technologies, facilities, and partnering opportunities.

LPS is a free online resource

and single access point with intuitive and multi-faceted search capabilities.



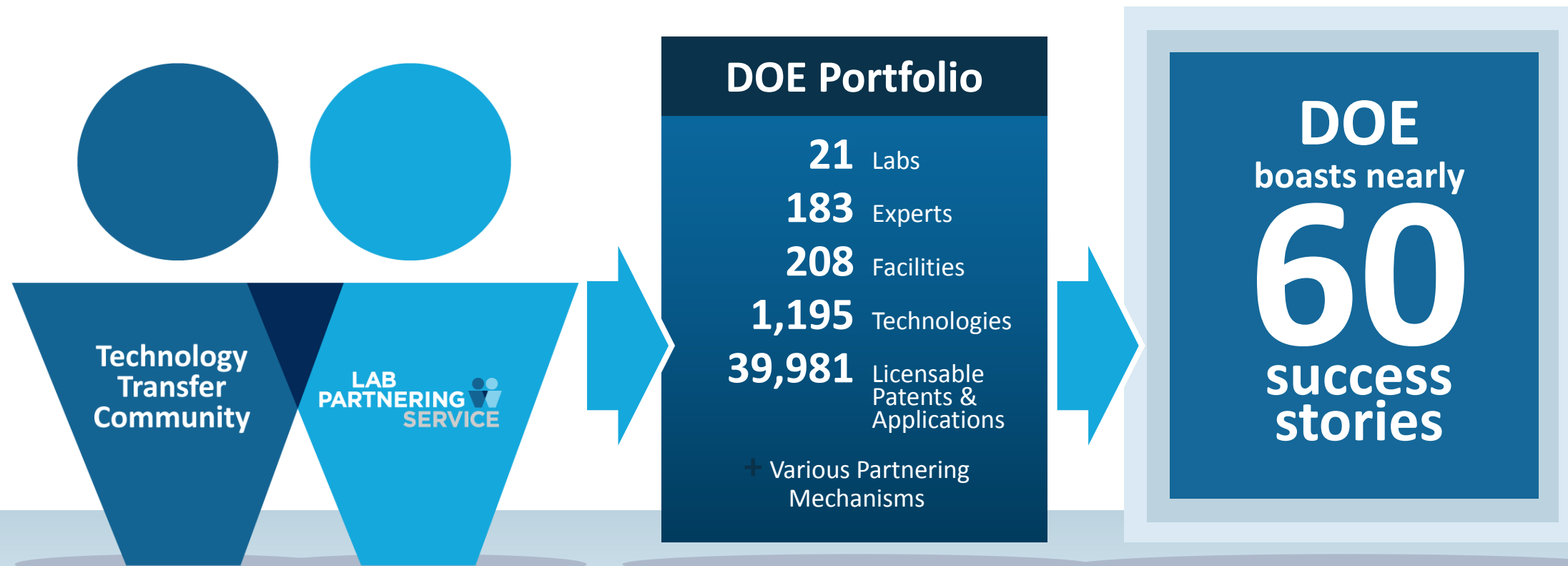
Lab Partnering Service and Community Benefits

DOE's Lab Partnering Service (LPS)

enables commercialization by connecting the international technology transfer community to the DOE's portfolio of experts, technologies, facilities, and partnering opportunities.

LPS is a free online resource

and single access point with intuitive and multi-faceted search capabilities.

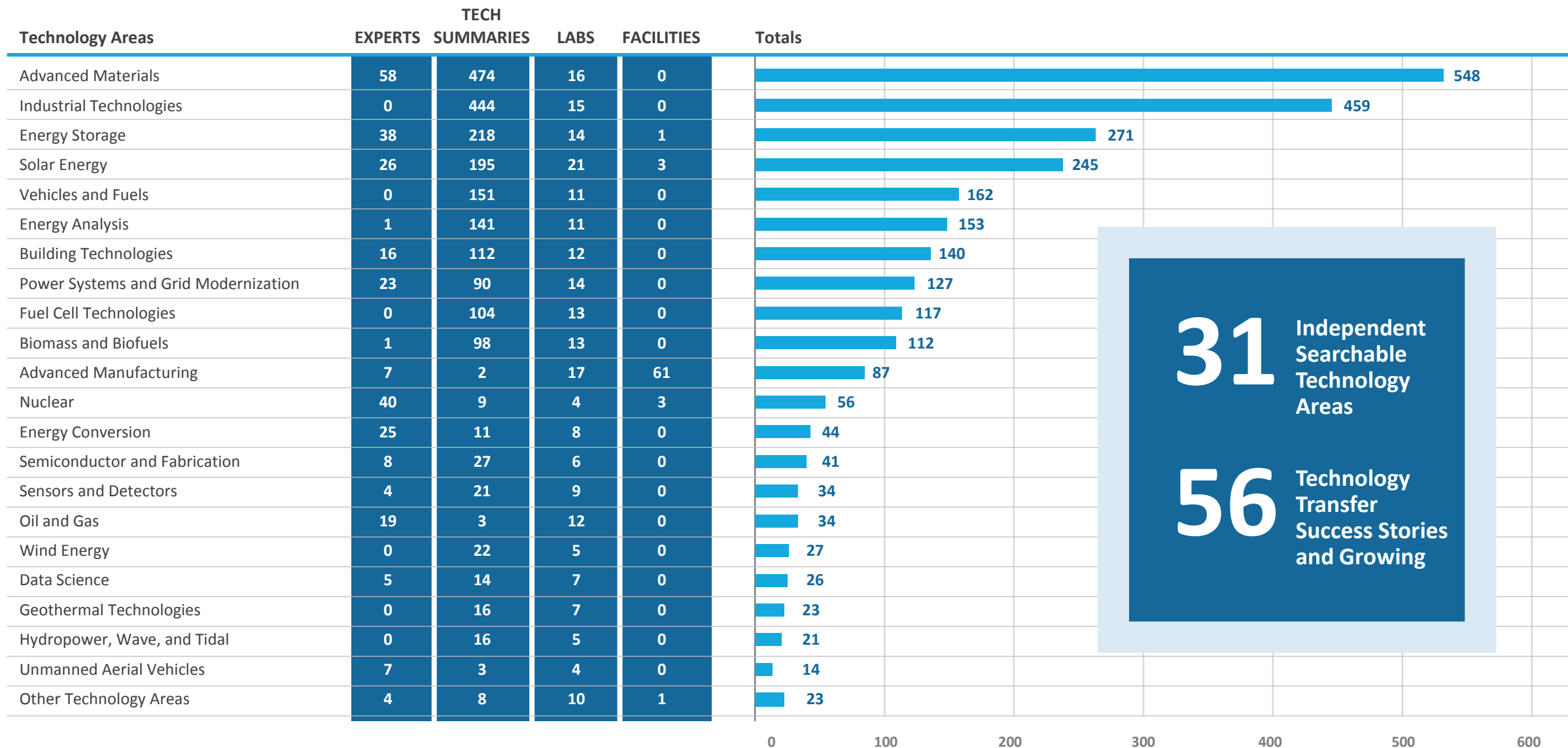


LPS Platform



- Labs
- Facilities
- Technology Summaries
- Visual Patent Search
- Experts
- How to Partner

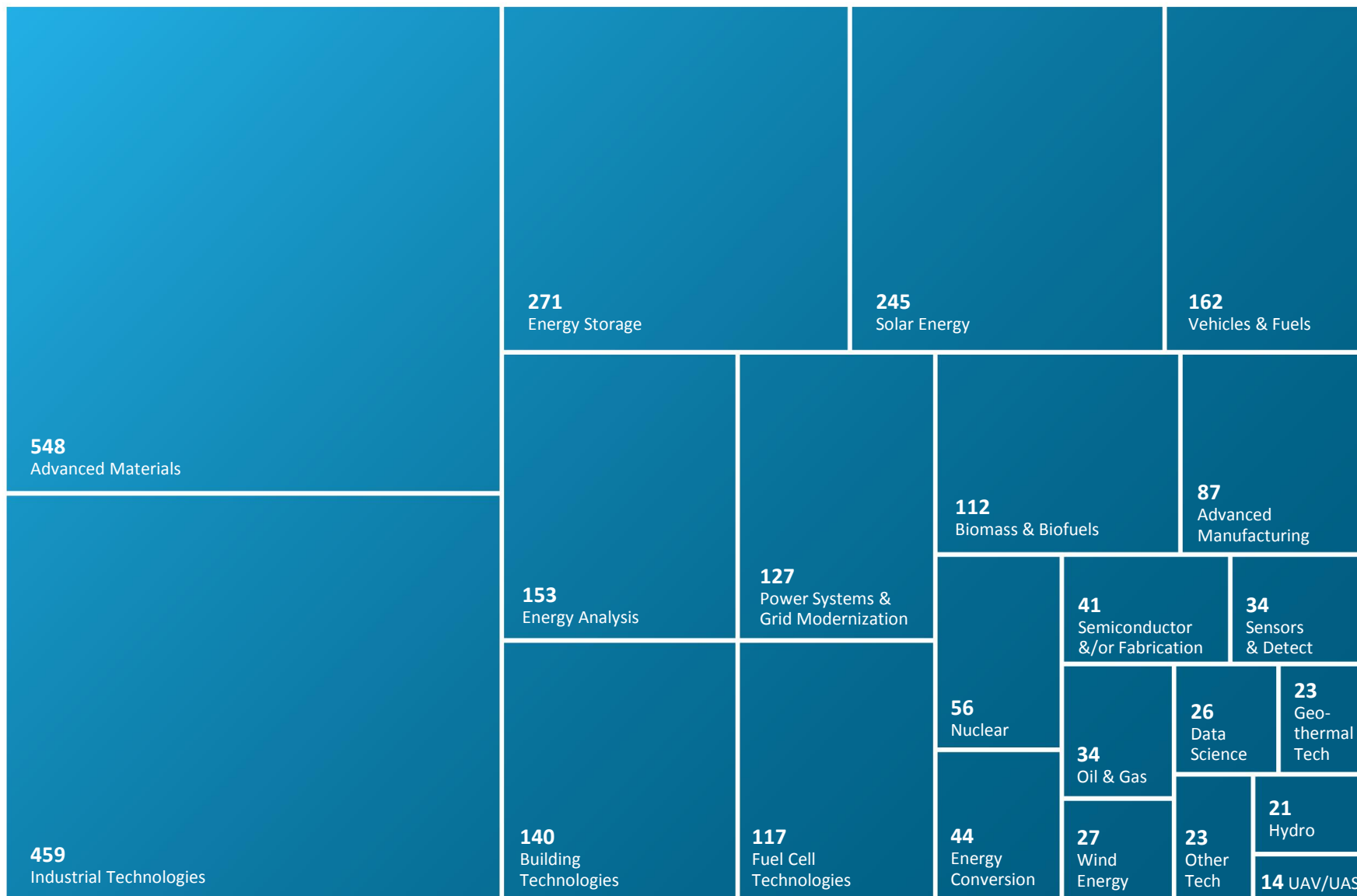
LPS by the Numbers



31 Independent Searchable Technology Areas

56 Technology Transfer Success Stories and Growing

Total Number by Technology Area



Experts, Technology Summaries, Facilities, and Labs

31 Independent Searchable Technology Areas

56 Technology Transfer Success Stories and Growing

Over **14,000** Website Visits and **218** Inquiries
since LPS's July 2018 release

What LPS users are saying:

"It's a wonderful thing..."

LPS has some great functional tools to give people access and awareness... then other agencies can join them [DOE]..."

"LPS is a great tool."

"It's been great!"

Really love OTT and the people there. They're highly supportive and are trying to help us. The LPS experience has been great"

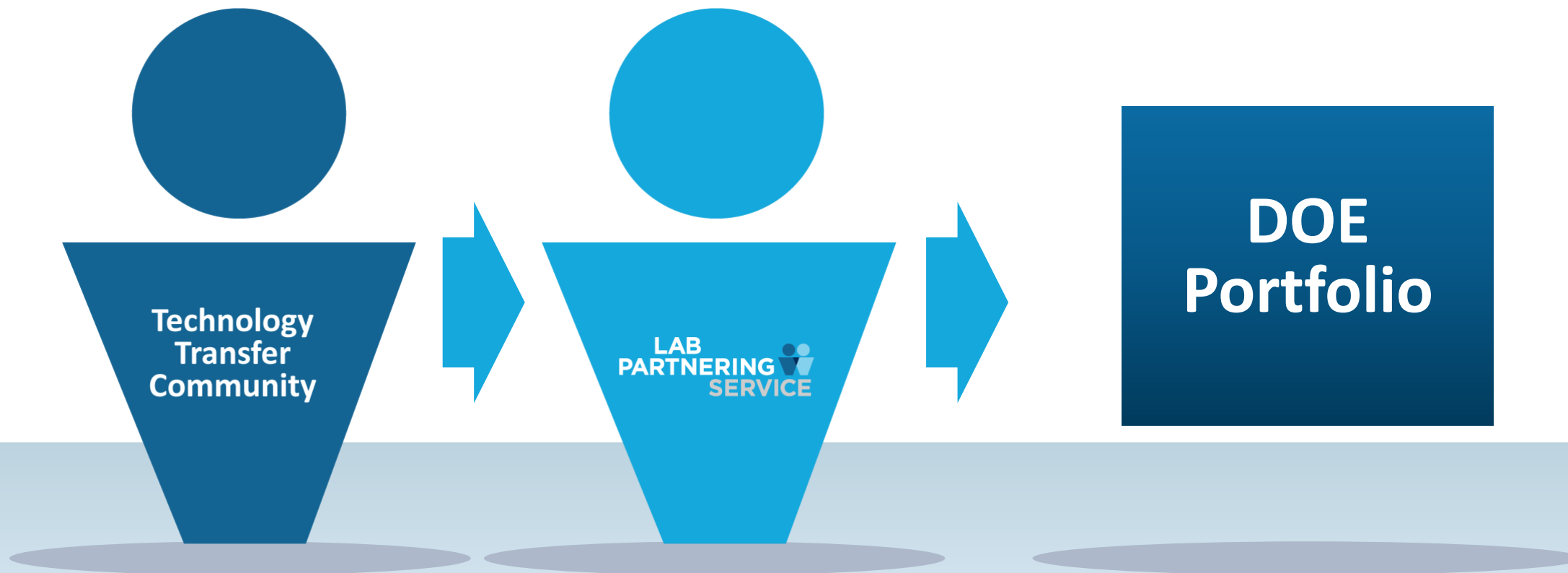
"...for a small or medium company...LPS is fantastic...
LPS is certainly providing an incredibly valuable service
to those who are getting started or medium-sized organizations,
I don't know how else they'd be able to do it..."

What's on the Horizon for LPS?

LPS's value lies in the user community served, ease of access and use, and the breadth and depth of searchable information contained.

Current State

LPS enables efficient technology transfer as the community's matchmaker to the DOE portfolio.



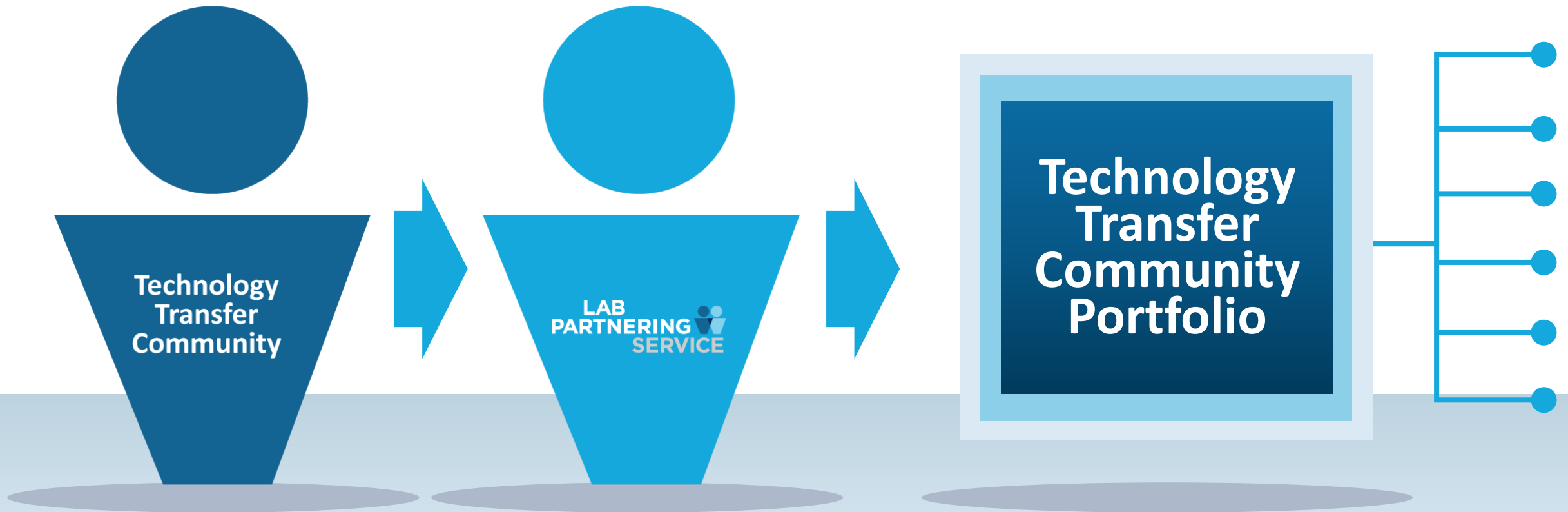
Transitioning to the Future

How can DOE make LPS even more valuable to the community and realize its future potential?

Improve the user experience • **Expand beyond DOE** • **Add content that resonates**

Future State

LPS enables efficient and unprecedented technology transfer as the community's matchmaker to the community-wide portfolio and by providing tailorable content for partners.



Transitioning to the Future

Future State

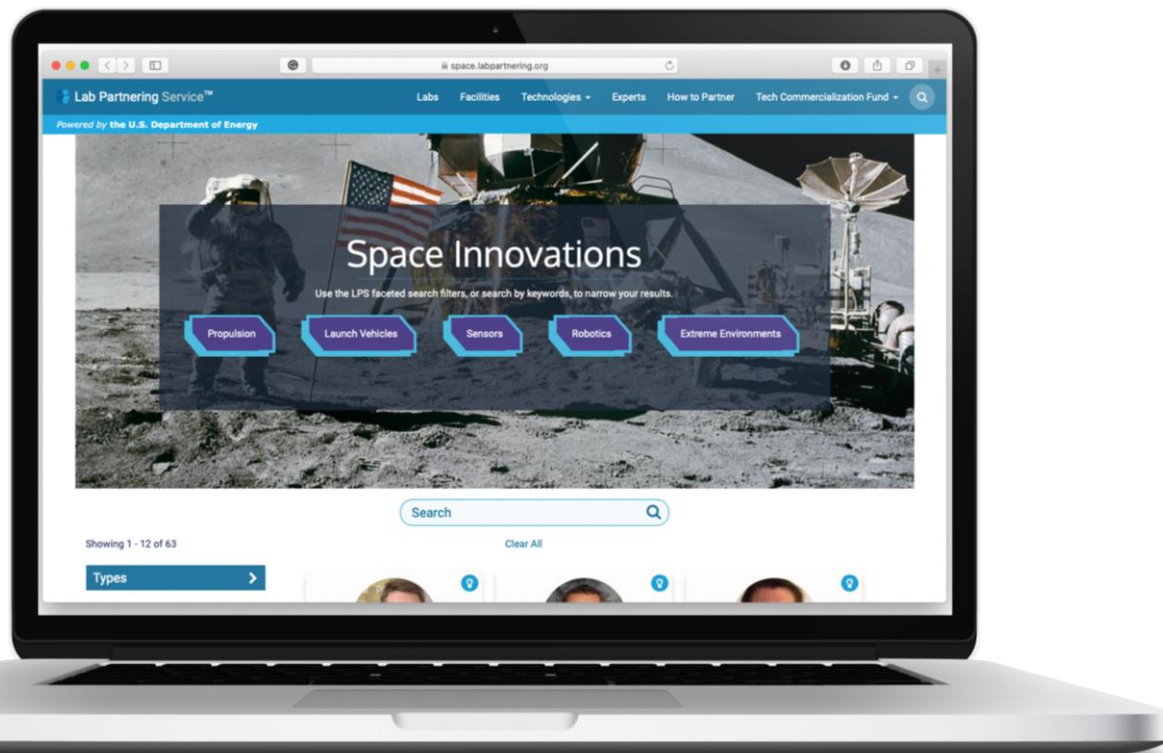
LPS enables efficient and unprecedented technology transfer as the community's matchmaker to the community-wide portfolio and by providing tailorable content for partners.



Make It Your Own

Future State

Example:
space.labpartnering.org



Benefits to Participating Partners

- Access to larger community and opportunities
- Showcase resources and capabilities to wider audience
- Increase exposure to existing and future customers
- Grow your customer base
- Build and tailor your brand
- Save resources by leveraging the existing LPS capability and support of the DOE
- “Make it your own” with control over customized pages, materials, and content



**You know your community.
You know your customers and what they care about.**

Use Lab Partnering Service as your launch point.

**LAB
PARTNERING SERVICE** 

Ready to Discover, Connect, and Partner?

Contact: **The Office of Technology Transitions**

1000 Independence Ave. SW
Washington DC 20585

Operator & Personnel Directory:
Office of Technology Transition:
Energy Investor Center:

202-586-5000
OTT@hq.doe.gov
EIC@hq.doe.gov

Contact: **Rob Bectel**

robert.bectel@hq.doe.gov

Senior Program Analyst
Office of Technology Transitions
U.S. Department of Energy

202-586-9290 (Desk)

