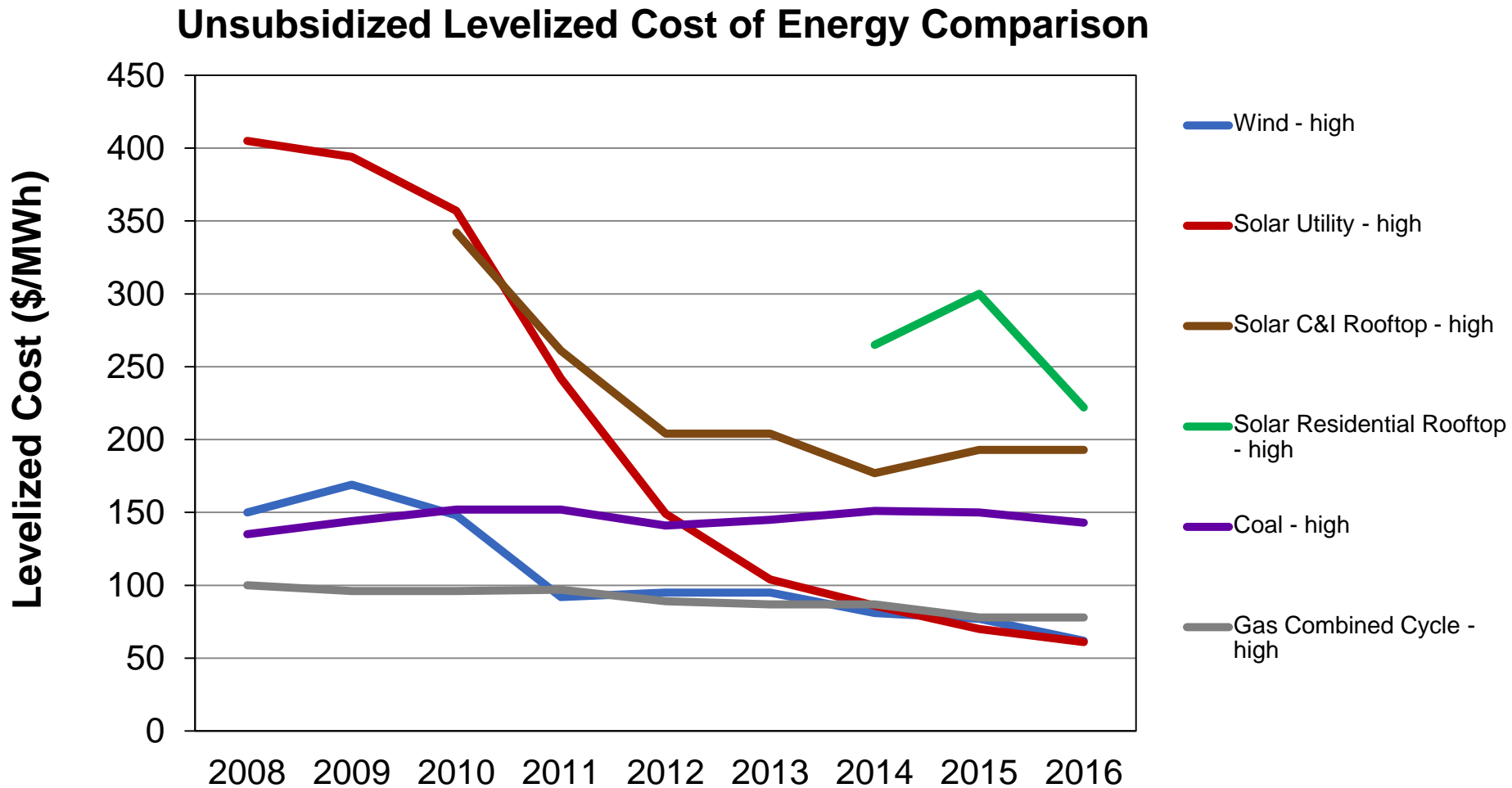


Levelized Cost of Energy



Source: Lazard's Levelized Cost of Energy Analysis, versions 2.0 (2008) through 10.0 (2016).



Levelized Cost of Energy

Unsubsidized Levelized Cost of Energy, 2016



Source: Lazard's Levelized Cost of Energy Analysis, version 10.0 (2016).



Office of Energy Projects Energy Infrastructure Update For December 2017

New Generation In-Service (New Build and Expansion)

Primary Fuel Type	December 2017		January – December 2017 Cumulative		January – December 2016 Cumulative	
	No. of Units	Installed Capacity (MW)	No. of Units	Installed Capacity (MW)	No. of Units	Installed Capacity (MW)
Coal	0	0	0	0	3	45
Natural Gas	6	842	79	11,980	125	9,283
Nuclear	0	0	1	102	3	1,290
Oil	0	0	10	40	22	67
Water	0	0	11	214	37	449
Wind	8	913	69	6,881	93	8,045
Biomass	0	0	26	268	57	110
Geothermal Steam	1	37	2	55	0	0
Solar	42	798	503	4,853	612	9,282
Waste Heat	0	0	1	220	2	23
Other *	2	0	23	1	27	22
Total	59	2,590	725	24,614	981	28,616

Sources: Data derived from Velocity Suite, ABB Inc. and The C Three Group LLC. The data may be subject to update.

Total Available Installed Generating Capacity

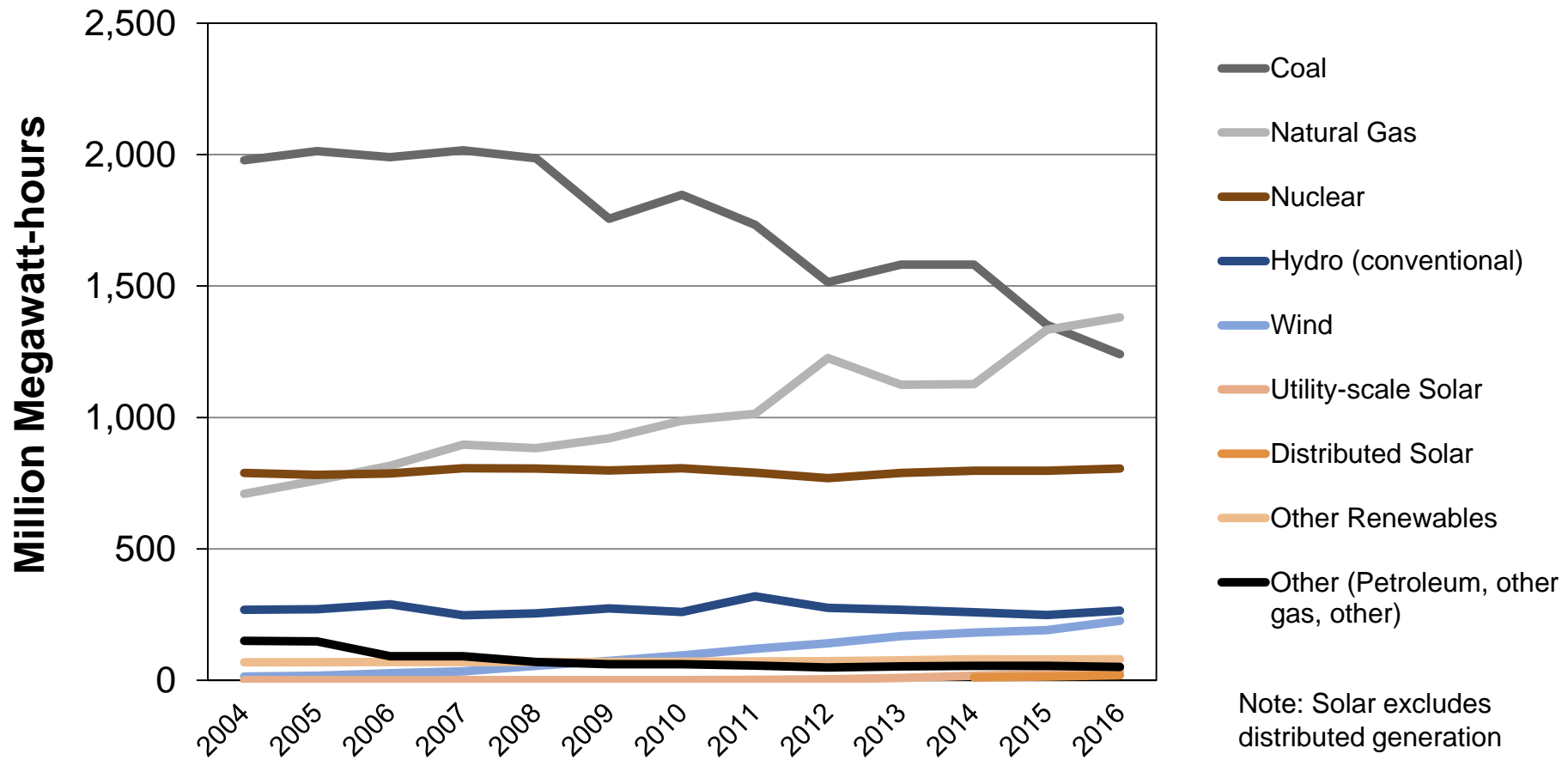
	Installed Capacity (GW)	% of Total Capacity
Coal	277.49	23.35%
Natural Gas	517.14	43.51%
Nuclear	108.18	9.10%
Oil	43.53	3.66%
Water	100.86	8.49%
Wind	88.53	7.45%
Biomass	16.68	1.40%
Geothermal Steam	3.83	0.32%
Solar	30.30	2.55%
Waste Heat	1.26	0.11%
Other*	0.79	0.07%
Total	1,188.59	100.00%

Sources: Data derived from Velocity Suite, ABB Inc. and The C Three Group LLC. The data may be subject to update.

* "Other" includes purchased steam, tires, and miscellaneous technology such as batteries, fuel cells, energy storage, and fly wheel.

U.S. Electricity Generation

U.S. Net Electricity Generation by Source, All Sectors



Source: U.S. Energy Information Administration, *Electric Power Annual*, Tables 3.1.A. and 3.1.B.

